

# Platinum 888

## Advertising on Hold Player

### User Guide

Version 1.4 ENGLISH

This user guide contains information on the installation and operation of the PLATINUM 888



Version 3.0.1 Multi Track with track skip single play and multi-track play

**Manufactured by Platinum 888**

**For Sales, Service & Technical assistance please call**

**1300 663 301**

# DESCRIPTION

**The Platinum 888** is the latest technology digital message player available. It incorporates many features required by users within the ON HOLD industry and has been designed with their help to bring the most functional unit to the marketplace. It has a powerful built in amplifier to accommodate a wide variety of telephone systems. The Platinum 888 will automatically start when a media source is present. It will re start automatically after any power interruption. The Platinum 888 has minimal power consumption. There are no moving parts that can wear during operation. The volume control is digital and has been placed on top of the unit for easy adjustment and access by the user.

## SD CARDS & USB

**The PLATINUM 888** uses commonly available SD Flash Cards or USB keys to store its MP3 based messages. This technology is completely non volatile, meaning your message is not lost in transport or when power is lost. The SD or USB keys can be overwritten indefinitely, without any deterioration in quality. The SD cards & USB keys can be changed in seconds and will re start as soon as plugged in. No Power cycle is required to update the message/ advertising on this player.

Each Platinum 888 is supplied with a 128MB USB Key, which provides for up to 256 minutes of advertising at CD quality (128kbps). The Platinum 888 will play up to the current size SD card of 8 GIG. It can also play USB sticks up to the maximum size of 19GIG.



The platinum 888 is supplied with a USB key as pictured below. Alternatively the unit can be ordered without the USB key for sub dealers who have existing SD/MMC Cards



As the picture depicts above left the PLATINUM 888 has been tested with a wide variety of USB Keys and SD/MMC Cards from a wide range of manufacturers. The technology used in the PLATINUM 888 requires **no special pre preparation of the card**. The USB Keys and SD/MMC cards just need to be formatted in windows. If either form of media has been used for another purpose such as document or picture storage from digital cameras simply remove the contents and the USB stick/SD/MMC card is ready to use with the PLATINUM 888

## SINGLE & MULTI-TRACK PLAY

**The PLATINUM 888** is capable of single track continuous play or multi-track continuous play. Using the selector button as below (FIG 1) you can select at any time between modes. Once the mode is set it will be indicated by the flashing LED (FIG 2). Either GREEN for mode 1 Single track or RED for mode 2 MULTI track play.

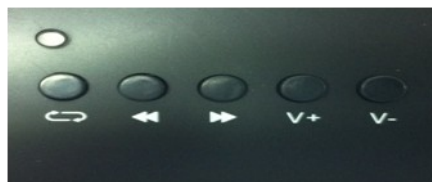


FIG 1 track select as indicated by arrow First button to the left

# INSTALLATION & OPERATION of PLATINUM 888

## **If an existing RADIO, CD player or other media source is being used:**

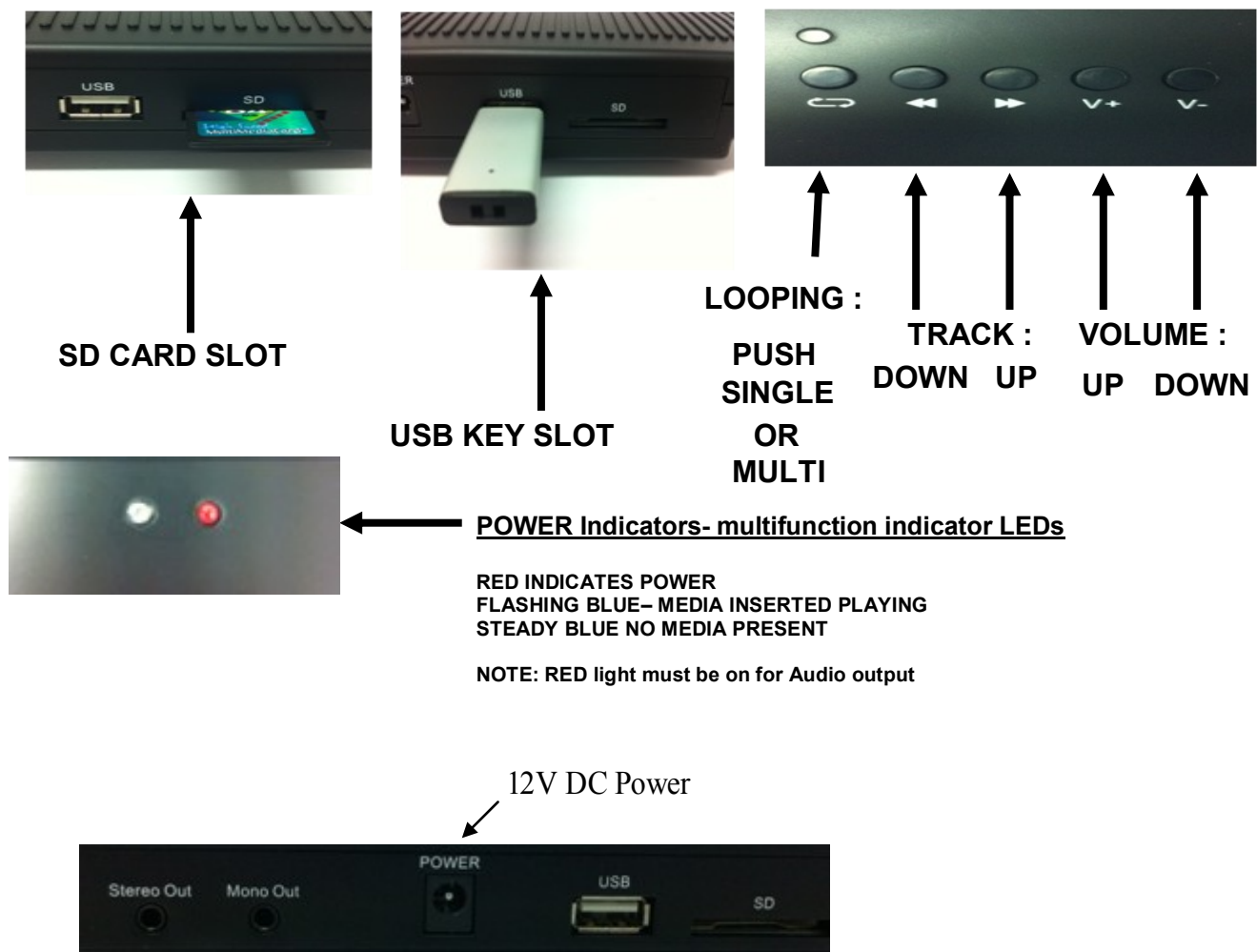
1. Remove the power adaptor from the existing source.
2. Remove the existing audio source by disconnecting the audio cable from the Line Isolation unit (LIU) which is connected to the clients telephone system.
3. Re connect the audio line (input/Source from the LIU) to the Audio output on the PLATINUM 888 as per the diagram below. (FIG 1)
4. Connect the supplied 12VDC 500ma power adaptor to the PLATINUM 888 as per the diagram below to the power receptacle. (FIG 2)
5. Insert the SD card or USB key whichever has been supplied with unit (FIG 6)
6. The unit will now begin to play. (See FIG 4 for play status)
7. Call the customers telephone number and have them place you on hold. From there adjust the volume control up or down to the desired level (FIG 5)

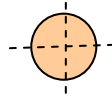
## **If an existing Audio source is not being used:**

The PLATINUM 888 in Australia is required to be connected to your Telephone System through a suitable AUSTEL/ACA approved Line Isolation Unit (LIU). If you can not locate the LIU you may need to contact the technical staff that installed the customers Telephone system to locate it. If it is found not to be fitted with an LIU DO NOT INSTALL THE PLATINUM 888 to the audio input of the phone system. (Disregard this above note if your Country allows such device to be fitted without the use of an LIU) .

It is then advised you have the technician install an Liu as soon as possible to allow operation of this service.

Please Note : Your Telephone System may need to be programmed by an approved technician to allow the service to be used.

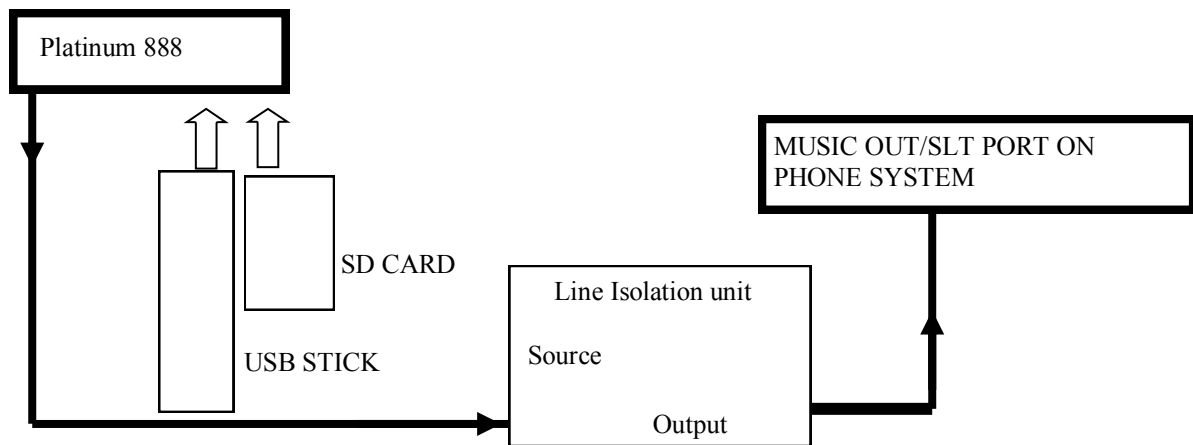




### **Wall Mounting Installation Template:**

1. Ensure the wall is safe to insert screws without being damaged or damaging items that may be behind the wall
2. Place this template on the wall and mark the centre points as the points to insert the screws.
3. Secure two screws by using wall plugs for concrete wall or plaster board. Insert screw so the head protrudes 4 mm to allow easy securing.
4. Place unit on the wall and gently pull down to lock device to wall.

## **Connection Diagram**



### **SPECIFICATIONS – PLATINUM 888**

Power input: 12VDC/500mA  
Audio Output : 15W @ 8 ohms  
Audio File type : MP3 Stereo or Mono

### **WARRANTY**

Your Platinum 888 is warranted against defects from parts or workmanship for a period of one year (12 months) from date of purchase. In the event of failure, return the product, with proof of purchase to your nearest dealer or direct to head office for repair or replacement.

The Warranty is fully transferrable for the life of the unit. (Provided proof of transaction/legal title has taken place)

The Dealer referred to is in this case Platinum 888.

Outside of Australia the dealer will be the local importing agent as designated by Platinum 888.

This Dealer/Importer will be the warrantor.

This Warranty shall not apply to any unit which has been subject to any of the following circumstances.

Alteration, modification, abuse, neglect, accident, incorrect or outside voltage such as lightning or power surge or used in any manner contrary to these instructions.

The end user is responsible for all freight costs to the point of repair. The dealer will be responsible for freighting the replacement unit back to the user.

This Warranty gives you specific legal rights and you may also have other rights which may vary from state to state. Our obligation to the end user is solely to repair or replace the product. The dealer is not liable for any incidental or consequential damages due to any defects. The dealer also states that where necessary by State and Federal laws of the land and by the ACMA (Australian communications and Media Authority (or by your local Governing body if used outside Australia) an LIU is to be fitted in series with the communication system to protect the communication system and any ancillary equipment from damage.



N14939



**RoHS Compliant**